

Brandt

User Manual

Washing Machine



Contents

| | |
|---|-----------|
| Contents | 2 |
| Safety Warning | 3 |
| Unpacking | 6 |
| Installation | 7 |
| Installing Your Washing Machine | 7 |
| Choosing the Right Location for Your Washing Machine | 7 |
| Moving and Installing | 8 |
| Removing the Transit Bolts..... | 8 |
| Moving the Washing Machine from One Location to Another | 8 |
| Hose and Cable Lengths | 9 |
| Levelling the Washing Machine..... | 9 |
| Water Supply Hose..... | 9 |
| Water Drain Hose..... | 10 |
| Connecting to the Mains Supply..... | 11 |
| Product Overview | 12 |
| The unit | 12 |
| The Control Panel | 13 |
| Preparation | 14 |
| Organising Laundry | 14 |
| Preparing Laundry..... | 14 |
| Adding Detergent and Softener..... | 14 |
| Before First Use | 16 |
| Wash Setting | 16 |
| Standard Washing..... | 16 |
| Removing Washing (Once programme is finished)..... | 16 |
| Selecting the Programme | 17 |
| Muting & Turning On the Sound..... | 18 |
| Important Information..... | 18 |
| Washing Delicates (Wool and Silk Programmes)..... | 18 |
| Adding Delicate Laundry Items to the Drum | 18 |
| Which Detergent to Use | 18 |
| How to Use Laundry Starch..... | 18 |
| How to Set the Child Lock | 19 |
| Maintenance - Cleaning the Washing Machine | 20 |
| Cleaning the Drum..... | 20 |
| Cleaning the Exterior of your Washing Machine..... | 20 |
| Cleaning the Detergent Drawer | 20 |
| Siphon Plug..... | 20 |
| Cleaning the Door Seal and Window..... | 20 |
| Cleaning the Drain Filter | 21 |
| Preventing a Frozen Water Supply Hose | 21 |
| Cleaning the Filter Net of the Water Supply Hose | 21 |
| Hints and Tips | 22 |
| Questions and Answers..... | 24 |
| Error Codes..... | 25 |
| Specifications..... | 25 |
| Product Fiche | 26 |

Safety Warning

For your continued safety and to reduce the risk of injury or electric shock, please follow all the safety precautions listed below.

WARNING!

- If you will not be using the washing machine for a while such as when you go on holiday, disconnect the plug from the mains supply and turn off the water supply to the washing machine. This is particularly important if there is no drainage around the washing machine.
- If the water supply is left on, water pressure may build up and cause a leak.

General Use

- Transit bolts are used to transport the washing machine. You should remove these using a spanner or similar tool before you install the washing machine. If you do not, it will cause strong vibrations when the washing machine is spinning.
- Do not install your washing machine anywhere that is damp or exposed to the weather. If you do, it may cause an electric shock, fire, failure or deterioration.
- Do not pour water directly onto any part of the washing machine. It may cause a short circuit or electric shock.
- Keep burning objects such as candles or cigarettes, away from the washing machine. They may cause a fire or damage.
- Keep flammable substances well away from the washing machine – for example kerosene, gasoline, benzene, paint thinner and alcohol, or clothing soaked with these. They may cause an explosion or a fire.
- This washing machine is only suitable for washing textiles labelled 'washing machine washable'.
- Do not connect the washing machine to hot water. The washing machine works with cold water only.
- Before you start using the washing machine, turn the tap on to check that the hose is properly connected. If it's not, there may be a water leak.
- Do not put too much laundry or detergent into the washing machine. It may cause issues with the washing machine or laundry.
- Be careful not to get your laundry caught in the door when you close it. This could cause a water leak or damage your laundry.
- This washing machine is for household (domestic) use only.

Power Source and Cable

- Use an independent household dedicated mains socket, rated at 10 Amp 220V to 240V AC. If the washing machine is plugged in with other appliances, it may overheat and cause a fire.
- Make sure the mains plug is pushed firmly into the socket. A loose connection may overheat and cause electrical shock or a fire.
- Check the mains lead and mains plug for any damage. If the mains cable is damaged, it must be replaced by the manufacturer, its service agent or similarly qualified persons in order to avoid a hazard.
- Unplug the mains lead when cleaning the washing machine.
- Do not touch the mains lead or mains plug with wet hands. It may cause an electric shock.
- Check the mains plug regularly for dirt. If dirt accumulates on the mains plug, it could cause a fire. To prevent this, unplug the cable and clean the mains plug with a dry rag.
- If you disconnect the mains plug, hold onto the mains plug not the cable. Pulling the cable may cause an electric shock or a fire.
- Do not use a mains plug adapter or extension cable. It may overheat and cause a fire.

- Make sure your home voltage matches the voltage displayed on the washing machine. If you are not sure, contact an electrician.
- The mains plug must remain accessible to allow disconnection or an all pole switch must be incorporated in the fixed wiring in accordance with the wiring regulations.

To Prevent Injury / Damage

- Do not climb on the washing machine. You may hurt yourself or damage the washing machine.
- When opening and closing the door ensure you keep fingers away from the door hinge, or this could lead to injury.
- Check your washing for objects such as nails, pins, coins, clips etc. They could damage your laundry or the washing machine.
- To prevent any large, heavy objects (e.g., buckles, large buttons, etc.) from hitting the glass door, turn your clothing inside out or remove the heavy objects. They could damage your laundry or the washing machine.
- Do not wash, rinse or spin waterproof sheets or clothing. These may cause vibration or washing machine failure during spin-drying, which could lead to injury, damage to the washing machine or damage due to water leaking.
- Be careful when draining hot water or any detergent from the drum.

- Do not dismantle, repair or modify the washing machine. The washing machine could malfunction and cause a fire or injury.
- This appliance is not intended for use by persons (including children) with reduced physical, sensory or mental capabilities, or lack of experience and knowledge, unless they have been given supervision or instruction concerning use of the appliance by a person responsible for their safety.
- Children should be supervised to ensure that they do not play with the appliance.
- Do not touch the laundry inside the washing machine, until the drum has completely stopped. Even if the drum is spinning at low speed it can cause an injury. Take particular care of children in this respect.
- The appliance is to be connected to the water mains using the new hose-set supplied. Old hose-sets should not be reused.
- The ventilation openings in the base of the washing machine must not be obstructed by a carpet.

WARNING



IT IS HAZARDOUS FOR ANYONE OTHER THAN AUTHORISED SERVICE PERSONNEL TO CARRY OUT SERVICING OF REPAIRS WHICH INVOLVE THE REMOVAL OF COVERS.

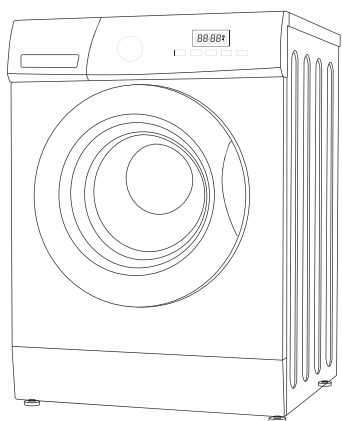


TO AVOID THE RISK OF AN ELECTRICAL SHOCK DO NOT ATTEMPT REPAIRS YOURSELF.

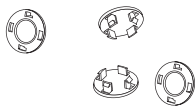
Unpacking

Remove all items from the packaging. Retain the packaging. If you dispose of it please do so according to local regulations.

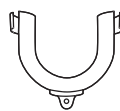
The following items are included:



The Main Unit



Transport Bolt Covers x 4



U-Shape Drain Hose Holder



Water Supply Hose x 1

INSTALLATION

Installing Your Washing Machine

Please read and follow the instructions carefully.

- In addition to the instructions mentioned here, special regulations of the relevant water and power supply companies may apply. If in doubt, have the washing machine connected by a qualified technician.
- The washing machine is heavy - caution when lifting it. Do not lift by projecting components (e.g. washing machine door).
- Warning: Frozen hoses may tear/burst. Do not install washing machine in outdoor areas or where there is a risk of frost.
- Lay hoses and cables in such a way that there is no risk of tripping over them.

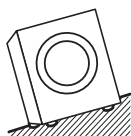


An additional space (approximately 120mm) is required at the rear of the washing machine. This is to allow enough space for the water hose and drain hose connections.

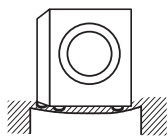
Choosing the Right Location for Your Washing Machine

- Make sure there's enough space for your washing machine.
- Install your washing machine on a flat, stable surface to avoid excessive vibrations and noise.
- Don't install your washing machine in direct sunlight or in a place where temperatures can reach freezing.

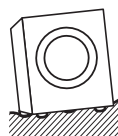
✘ Sloping surface



✘ Unstable



✘ Bumpy surface



Two or more people are required to move the washing machine.

- The ventilation openings in the base of the washing machine must not be obstructed by carpet.
- Start by tilting the washing machine backwards.
- One person should stand behind it, holding the rear of the top panel. The other person should grip the bottom feet at the front.
- Check that you have all the required accessories for installation.
- We recommend that you entrust the installation of the washing machine to a qualified technician.

Moving and Installing

Removing the Transit Bolts

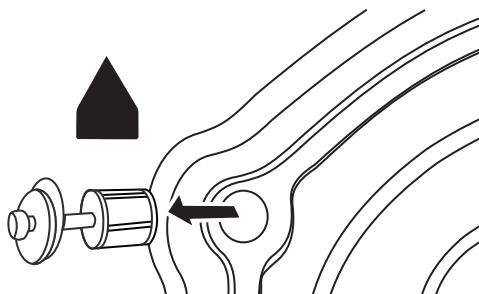
Four transit bolts keep the interior of the washing machine in place while it's being moved. They need to be removed before installation. Use a spanner (not supplied) and follow the instructions detailed below.



Don't run the washing machine without removing the transit bolts, as this can cause excessive vibrations and may damage your machine.

To remove the transit bolts:

1. Use a spanner to loosen the four bolts. They are located at the rear of the washing machine.
2. Pull the bolts out horizontally. Make sure the entire bolt is removed.
3. Push the four cover caps (included with your accessories) into the respective bolt holes.



You'll need the transit bolts again if you move the washing machine, so make sure you keep them in a safe place.

Moving the Washing Machine from One Location to Another

Before you move the washing machine:

- Shut off the tap and run the washing machine to drain the water. Drain any remaining water from the pump hose.
- Disconnect the mains cable.
- Attach the transit bolts.



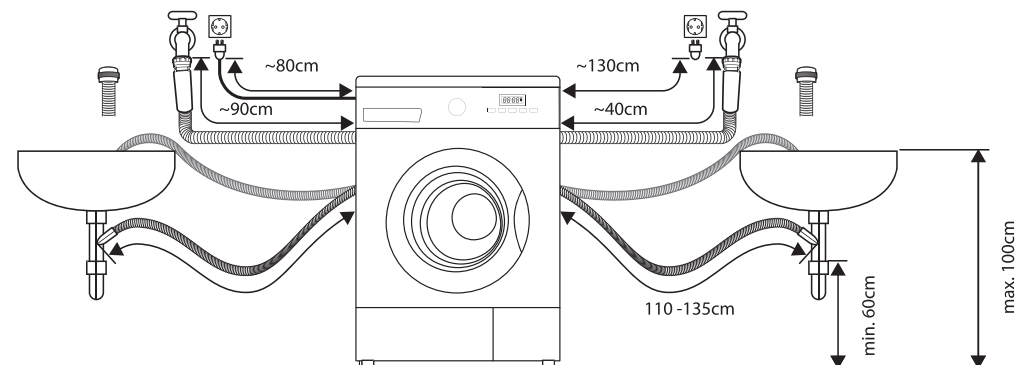
Make sure to fix the transit bolts prior to moving the washing machine.

INSTALLATION

Hose and Cable Lengths

How to connect from the left side

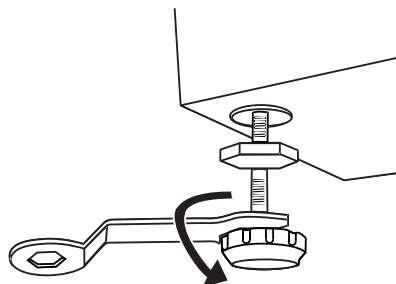
How to connect from the right side



Levelling the Washing Machine

There are 4 levelling feet on the underside. They must be adjusted to make sure the washing machine is level.

1. On each foot, loosen the lock ring by turning it clockwise.
2. Adjust all four feet by rotating each upwards or downwards.
3. Use a spirit level to ensure the washing machine is level.
4. Tighten each lock ring by turning them anti-clockwise (towards the washing machine body).



Ensure all four lock rings are tightened securely. Check that the feet are still bolted to the washing machine - if they're unbolted, the washing machine will move around.

Water Supply Hose

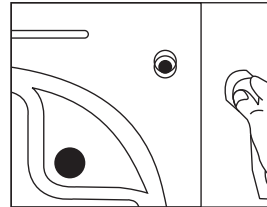
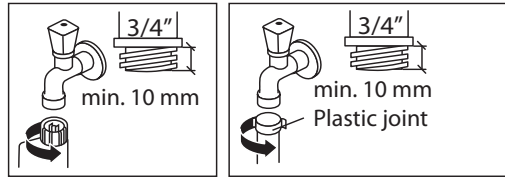
Points to remember

- Follow the instructions in this section to avoid water leaks.
- Don't connect the hose to a combination tap.
- Don't twist, squash, modify or cut the hose.
- This machine is designed to connect to the cold water supply. Do **not** connect to the hot water supply.
- Use only the new water supply hose supplied. Old hose sets should not be reused.

INSTALLATION

Connecting the Water Supply Hose

1. To prevent leakage from the connection joints, ensure the rubber washer seals are fitted to each end of the water supply hose. Do not use without the seals in place.
2. Fit the straight end of the water supply hose to the cold water tap.
3. Connect the angled end of the white headed hose to the water inlet valve on the machine. Hand tighten the plastic parts of the connections. If you are unsure, please call a qualified plumber for safer connections.
4. Open the tap slowly and check that there are no leaks around the connection joints.



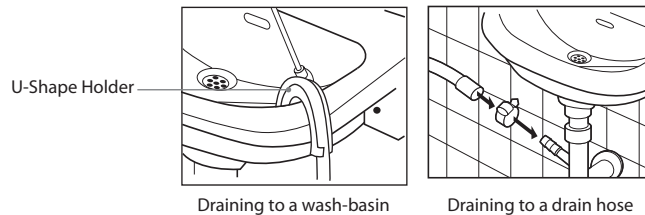
Water Drain Hose

Points to remember:

- Don't twist, pull out or bend the drain hose.
- Your washing machine should be no more than 85cm from the drain outlet.
- The water drain hose should be mounted at a height of minimum 60 cm, maximum 100 cm from the ground.

Draining to a sink or wash-basin

- Secure the drain hose in position, so it can't drop out of the basin.
- Don't block the basin's drain outlet, and make sure that the drainage through it is sufficient to prevent overflowing.
- Don't let the tip of the drain hose dip into the drained water, as this can cause the water to flow back into the washing machine.



INSTALLATION

Connecting to the Mains Supply

For your safety:

- Do not use a mains plug adapter or extension cable.
- If the mains cable or mains plug are damaged, stop using them and call a qualified technician for assistance.
- An earthed plug has been attached to the power cable of your washing machine. This plug must be inserted into an earthed socket capable of supplying 13 Amps. If you have no such sockets and fuses in your house, call a qualified electrician.
- The mains plug must remain accessible to allow disconnection or an all pole switch must be incorporated in the fixed wiring in accordance with the wiring rules.

Installation Check List

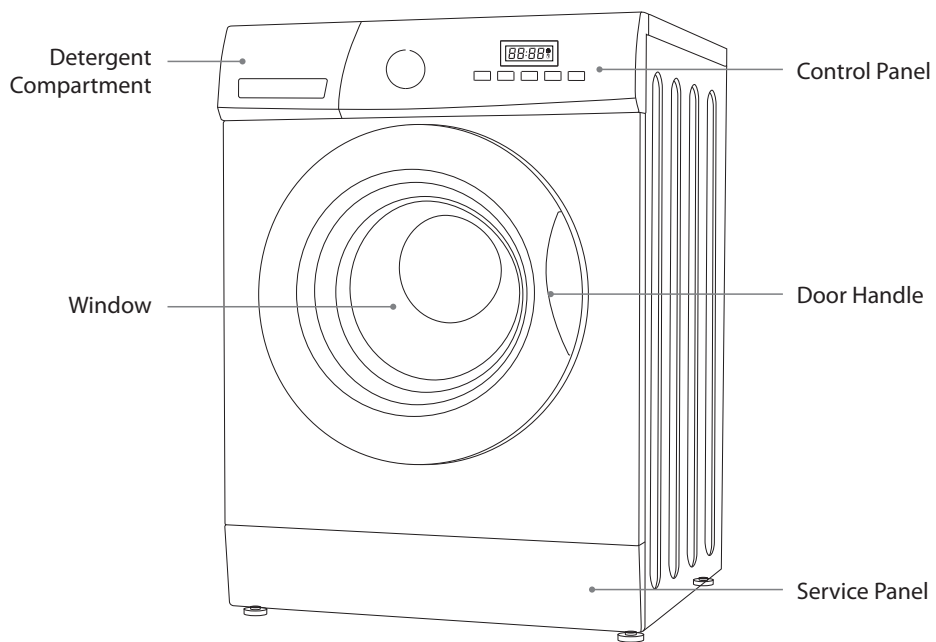
By now, you should have installed the washing machine.

Let's go through the checklist to ensure that the installation has been done correctly!

| Questions | | Checkbox |
|---|---|----------|
| Transit bolts - Have you removed them and attached the cover caps properly? | | |
| 4 levelling feet | Four Adjustable Feet - Are they bolted securely to the washing machine? | |
| | Four Feet Cushions - Are they standing flat? | |
| Power supply - Is the household dedicated mains socket rated for 220V - 240V AC and can supply 13 Amps? | | |
| Location - Is your washing machine on a flat, stable surface? | | |
| Water Supply Hose - Is it free from leaks and is the water supply normal? | | |

Product Overview

The unit



The Control Panel

My cycle

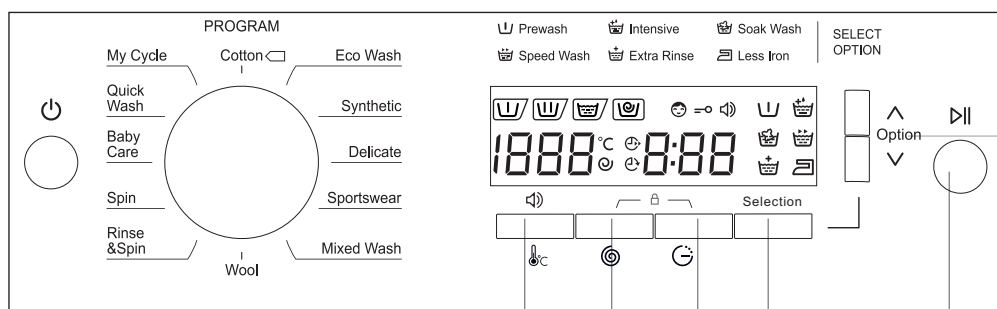
The default programme of "My cycle" is Cotton. You can press "Speed" for 3 seconds to memory the procedure you selected to reset "My Cycle".

Programme Dial

Different wash programmes can be selected according to your wash requirements.

LED Display

- The delay light will be on to indicate the delay time. It will start the programme after the selected hours.
- After the wash procedure begins, REMAIN will be illuminated, to display the remaining time, that is, the wash finishing time.
- When the child lock function is selected CHILD LOCKED will be illuminated.
- When the door is at the lock state, DOOR LOCKED will be illuminated. The door can be opened only after the light turns off.



Option Function Button

This button is used to select extra 6 functions prewash, intensive, etc.

Temperature Button

Press to select the desired temperature. when a temperature is set the indicator LED. (If no temperature indicator is lit, the water temperature is cold)

Spin Button

Select the desired spin speed of the selected wash programme - you can also select **Rinse Hold**

Delay Button

This button is used to delay the wash. Press continuously to select the time you want to start the wash.

Selection Function Button

This button is used to validate the option chosen.

Start/Pause Button

Press to start your wash. Press while in operation to pause your wash.



- If you need to change a setting after the wash has started, Push the On/off button to OFF. Re-select the programme, spin speed and optional functions, and then press the **Start / Pause** button. (Ensure the Child Lock is off, otherwise the original programme will continue.)
- Water is poured into the washing machine to perform an inspection at the time of shipment from the factory, so there may be drops of water or condensation in the washing machine. This is not an indication of a malfunction.



During initial start-up and use of the unit, there may be a slight smell while the motor is settling in. This is not a fault; this is normal operation.

Preparation

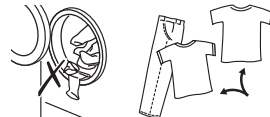
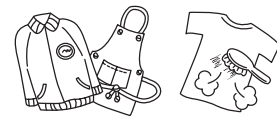
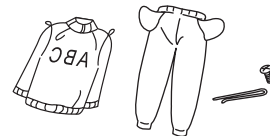
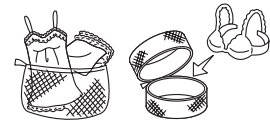
Read the following to understand how best to prepare your laundry for washing.

Organising Laundry

- Read the washing label on each garment to help you sort your washing into different loads.
- Sort the laundry by colour, type of fabric and by how soiled it is. This will help you choose the correct programme and temperature for each wash.
- Do not exceed the maximum load! See the programme selection table for the maximum load for the programme you require.

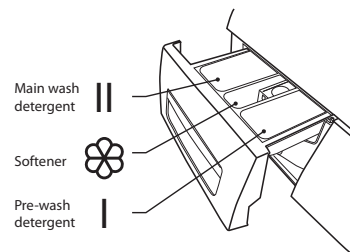
Preparing Laundry

- Treat stains before washing.
- Some items should be put into a cleaning net before going into the washing machine. i.e. bras with metal wires, tights and lace clothing to prevent damage.
- Check that pockets do not contain any objects which may damage your clothes and the washing machine.
- Tie up any loose strings on laundry, close zippers and reverse clothing with zips inside out.
- To prevent any large, heavy objects (e.g., buckles, large buttons, etc.) from hitting the glass door, turn your clothing inside out, or remove the heavy objects. These could damage your laundry or the washing machine.
- Remove any surplus hair, animal fur, sand, and other materials with a brush before washing.
- If clothes have raised fabric turn them inside out.
- Clothes that are not colour fast should be washed separately.
- Insert your clothes into the washing machine. Close the washing machine door. Ensure that you do not trap any items of clothing between the loading door and the rubber seal.



Adding Detergent and Softener

- Add detergent into the appropriate dispenser.
- Apply softener before you start washing.
- Apply detergent and softener according to the washing amount, the soiling level, the water hardness in your area and the manufacturer's instructions of these products.
- For slightly dirty clothes, do not pre-wash and put a small amount of detergent in compartment 2 (II) of the detergent drawer.



- For excessively dirty clothes, select a programme with pre-washing, use ¼ of the detergent to be used in compartment 1 (I) of the detergent drawer and the remaining amount in compartment 2 (II)



Dilute viscous fabric softener and fabric conditioner with water. Prevent blockage of the overflow. Maximum level is 40ml.

- Do not use the washing machine when the detergent drawer is removed. It may cause a water leak or it may not work normally.
- If you forget to add detergent, you can drain the washing machine by running a drain only programme. Then you can add detergent and start the programme again. Detergent only reaches the drum when water flushes through the detergent drawer.
- To prevent powder detergent staying in the drawer, dry the inside of the drawer with a cloth. Make sure the powder isn't lumpy when you add it into the drawer.
- If the rinse cycle isn't removing all the detergent from your wash, use less detergent.
- Softener should not exceed the MAX level in the compartment.
- Wash out unused softener with a splash of water or a damp cloth after the programme has finished.
- You can use liquid detergents in all programmes without prewash. For this, fit the liquid detergent level plate from the accessories bag into the 2nd compartment of the detergent drawer and set the amount of liquid detergent according to the levels on this plate. Remember to detach the liquid detergent plate when done.

| Fiber Type | Maximum Loading Capacity |
|------------|--------------------------|
| | |
| Cotton | 8.0kg |
| Synthetic | 4.0kg |
| Wool | 2.0kg |
| Delicate | 2.5kg |

Before First Use

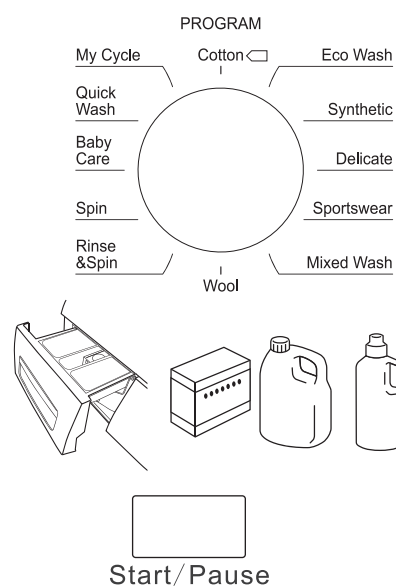
Before washing your clothes for the first time, run a full wash programme first:

1. Connect the machine to the mains power supply and the water supply.
2. Put a small amount of detergent in the detergent drawer. Close the drawer.
3. Press the **POWER** button.
4. Select a wash programme.
5. Press the **START/PAUSE** button.

Wash Setting

Standard Washing

1. Pull the door handle and put the laundry in the drum. (Refer to Preparation to sort your laundry before it goes into the drum.) Make sure no washing gets caught in the door.
2. Close the door and turn the Programme Selection Dial to select your wash programme.
3. Select the temperature if desired.
4. Add detergent into the detergent drawer. The quantity of detergent will depend on the amount of laundry, the degree of soiling and the water hardness. Use the amount of detergent suggested on the packaging.
5. Press the Power button.
6. Press the Start / Pause button to start the washing.
7. The washing machine will sound when the programme is complete.



- If the door is locked and you switched the washing machine off and then on - or if there's a power cut - it will stay locked for 1 minute.
- When you start the washing machine, the Start / Pause indicator will stop flashing and light up solidly.

Removing Washing (Once programme is finished)



Door remains locked for 1 minute after wash stopped.

- Open the washing machine door and remove your washing.
- Remove any foreign objects to avoid risk of rusting.
- Leave the door and detergent drawer open so that residual water can evaporate.

Selecting the Programme

Here are the available programmes, additional functions and option settings.

Temperature can be selected separately for certain programmes.

| Procedure Description | Load(kg) | Detergent Box | | | Prewash | Intensive | Soak | Speed wash | Extra rinse | Less iron | Default Temp. (°C) | Default Time (Min) | | Default Speed (RPM) | |
|--------------------------|----------|---------------|---------|----------------|---------|-----------|------|------------|-------------|-----------|--------------------|--------------------|------------------|---------------------|------|
| | | Case I | Case II | Tackifier Case | | | | | | | | One water inlet | Two water inlets | 1200 | 1400 |
| Cotton | 8.0 | ○ | ● | ○ | OK | OK | OK | OK | OK | OK | 60 | 3:57 | 3:14 | 1200 | 1400 |
| Eco wash | 2.0 | × | ● | ○ | NO | NO | NO | NO | OK | NO | 30 | 1:15 | 1:08 | 1000 | 1000 |
| Synthetic | 4.0 | ○ | ● | ○ | OK | OK | OK | OK | OK | OK | 40 | 1:25 | 1:12 | 800 | 800 |
| Delicate | 2.5 | × | ● | ○ | NO | NO | NO | NO | OK | OK | Cold | 1:13 | 1:00 | 600 | 600 |
| Sportswear | 4.0 | ○ | ● | ○ | OK | OK | OK | OK | OK | OK | 40 | 1:38 | 1:25 | 1000 | 1000 |
| Mixed wash | 8.0 | ○ | ● | ○ | OK | OK | OK | OK | OK | OK | 40 | 1:30 | 1:17 | 1000 | 1000 |
| Wool | 2.0 | × | ● | ○ | NO | NO | NO | NO | NO | NO | 30 | 1:05 | 0:58 | 600 | 600 |
| Rinse&Spin | 8.0 | × | × | ○ | NO | NO | NO | NO | OK | OK | — | 0:40 | 0:32 | 1000 | 1000 |
| Spin | 8.0 | × | × | × | NO | NO | NO | NO | NO | NO | — | 0:14 | 0:14 | 1000 | 1000 |
| Baby care | 8.0 | ○ | ● | ○ | OK | OK | OK | OK | OK | OK | 60 | 2:01 | 1:46 | 1000 | 1000 |
| Quick wash | 2.0 | × | ● | ○ | NO | NO | NO | NO | OK | OK | Cold | 0:21 | 0:15 | 800 | 800 |

The energy class is A+++ (The Two water inlets machine energy class is A+++)

Energy test program: Cotton 60°C/40°C

Half load for 8.0Kg machine:4.0Kg.

"Cotton 60°C/40°C " are the "standard cotton 60°C/40°C " programme and the standard washing programs to which the information in the label and the fiche relates, and they are suitable to clean normally soiled cotton laundry and that they are the most efficient programmes in terms of combined energy and water consumptions for washing that type of cotton laundry, that the actual water temperature may differ from the declared cycle temperature.

● Means must ○ Means optional × Means not necessary

Notes: The parameters in this table are only for user's reference. The actual parameters maybe different with the parameters in above mentioned table.

Muting & Turning On the Sound

- The machine will beep.
- To mute the sound, press "**TEMP**" for 3 Seconds after starting the wash programme.
- To turn on the sound, press "**TEMP**" again for 3 seconds.



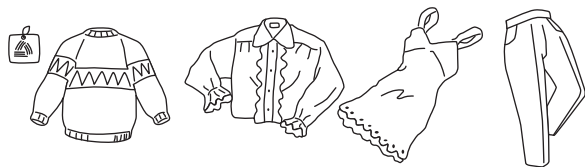
The setting will be kept until the next programme.

Important Information

Washing Delicates (Wool and Silk Programmes)

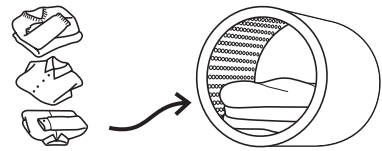
These programmes rock the drum gently for best results on delicate laundry.

- Silk laundry loads: 2kg or less
- Tips for Wool programme:
Approximate Weights:
 - Wool sweater (400g)
 - Silk blouse / under garment (200g)
 - Trousers (400g)



Adding Delicate Laundry Items to the Drum

- Close zips and buttons.
- Add items one by one on top of each other.
- Don't overload the drum as it may cause excessive vibrations or damage the washing machine.



Which Detergent to Use

- For woollen items, use a mild liquid detergent. Other detergents may damage your woollen clothes.
- With Wool or Silk programmes, you may need to use an extra rinse cycle to remove excess detergent from your clothes. This depends on the amount of detergent you use, and the amount of foam that develops in the main wash cycle.
- To add an extra rinse cycle, press the **Extra Rinse** button before you start the programme.

How to Use Laundry Starch

Synthetic laundry starch is a stiffening agent. Follow the laundry starch manufacturer's instructions.

- To use laundry starch, simply add it to the softener compartment, next to where you add detergent. It will automatically be applied to your clothes as part of the final rinsing cycle.
- If it's hard to pour, you can dilute the starch slightly with water before adding it to the softener compartment. Make sure you don't fill the compartment over the MAX level.



After using starch, clean the detergent drawer, especially the softener cover. Then remove any excess starch in the drum, run a "Quick" programme without detergent.

How to Set the Child Lock

The Child Lock prevents children from stopping programmes accidentally.

1. Switch the washing machine on.
2. When the washing machine is operating, press and hold the **Delay** button and **Speed** buttons at the same time for 3 seconds to set the child lock. The LEDs on the function buttons will blink to indicate that the child lock is active.
3. If a function button is pressed when the child lock is active, the function button lights will flash to indicate the child lock is active.
4. To deactivate the child lock, press and hold the **Delay** and **Speed** buttons until the function buttons stop flashing.



- Deactivate the child lock when the programme ends.
- Your machine will deactivate the spin speed selector and function buttons when the child lock is activated.

Maintenance - Cleaning the Washing Machine



Always unplug the washing machine before cleaning.

Cleaning the Drum

Any rust left inside the drum by metal articles must be removed immediately with chlorine-free detergent.

Never use steel wool.



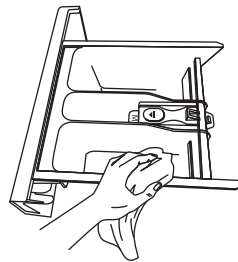
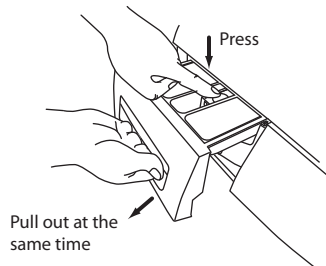
Don't put laundry in the washing machine during the drum cleaning.

Cleaning the Exterior of your Washing Machine

- Clean the outside of your washing machine with a soft cloth and mild detergent such as kitchen detergent.
- Don't splash water over the washing machine.
- Do not use cream cleansers, thinners or products containing alcohol or kerosene.

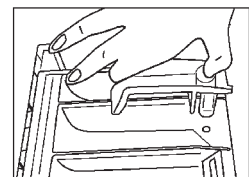
Cleaning the Detergent Drawer

1. Remove the detergent drawer by pulling and pressing gently on the rear centre part of the softener compartment.
2. Wash out old detergent from the drawer with water. (Use a cloth to clean the washing machine.) Residue detergent soon builds up if you don't clean the drawer regularly, and can develop mould.
3. Return drawer to original position.



Siphon Plug

Pull out the detergent drawer. Remove the siphon plug and clean any residual softener thoroughly. Fit the cleaned siphon plug in its location. Check it is fitted properly.



Cleaning the Door Seal and Window

- Wipe the window and seal after each wash to remove lint and stains. If lint builds up, it can cause leaks.
- Remove any coins, buttons and other objects from the door seal after each wash.

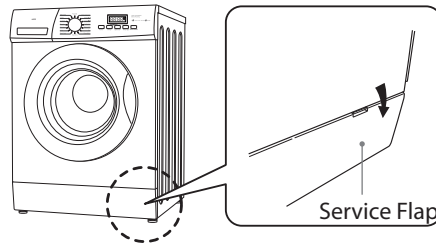
Cleaning the Drain Filter



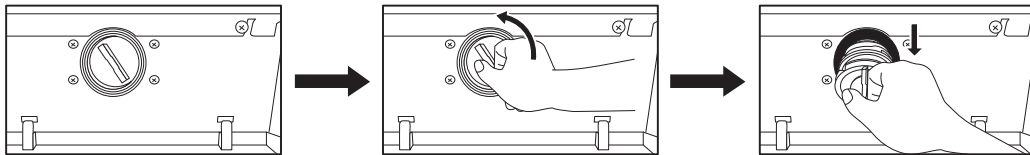
Be careful not to burn yourself while cleaning the drain filter. Water draining from the filter compartment may be hot after a high temperature wash.

Before cleaning the drain filter, switch off and unplug the washing machine.

1. Open the Service Flap by pulling the handle. Place a suitable container under the service flap to catch the water.



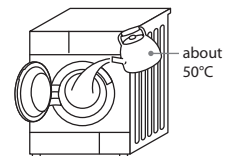
2. Carefully loosen the drain filter. Water may drain out - this is normal.
3. Unscrew the filter to remove it.
4. Remove any lint and debris before carefully replacing the filter.



5. Turn the filter clockwise to screw back into place. Close the Service Flap.

Preventing a Frozen Water Supply Hose

If your washing machine is delivered in freezing weather conditions, leave it at room temperature for 24 hours after you've set it up before using it. This ensures there's no ice blocking the water supply hose. If your water supply hose freezes, add 2 or 3 litres of warm water to the drum. Then run a "Drain" only programme.



Cleaning the Filter Net of the Water Supply Hose

1. Turn the water supply off at the tap.
2. Close the washing machine door and select "Drain" programme and press the **Start / Pause** button.
3. When finished, turn the power off. Remove the water supply hose from the tap.
4. Manually remove the filter net located on the tap side of the water supply hose and clean using a small brush (e.g. a toothbrush).
5. Return the filter net to its original position.
6. Re-connect the water supply hose to the tap and turn the tap back on, checking for leaks.

Hints and Tips

| Issues | Solutions |
|---|---|
| Buttons don't work | <ul style="list-style-type: none"> • Child lock is activated. Deactivate the child lock function. • The washing machine is operating a wash programme. • The Programme Dial was turned to a different programme. |
| Door doesn't open | <ul style="list-style-type: none"> • Door lock may be active. • The water temperature or level could be too high. |
| If you start a wrong programme accidentally. | First press Start/Pause button or turn the Programme Dial to 0(Off) position. Secondly turn the Programme Dial to the correct programme, spin speed or optional function you want. Press the Start / Pause button to start the new programme. (Note: We suggest that you do not change the programme after the machine has been running for 3 minutes.) |
| Unusual odour. | <ul style="list-style-type: none"> • Rubber parts and the motors may give off a smell when you first start using the washing machine, but this goes away over time. • You should wash the drum once a month. |
| You can't see any water. | This is normal: The water level is below the window. |
| There's no water going into the washing machine. | <ul style="list-style-type: none"> • The water tap might be turned off. • The water hose or water-supply hose may be frozen. • Your water supply may be disrupted. • The water-supply valve filter may be clogged. |
| There's only a small amount of water. | <ul style="list-style-type: none"> • If you have paused the programme and you restart, the washing machine may drain some water. • Don't pour water in through the door. |
| Water adds up during washing. | This is normal: water is supplied automatically as the level lowers, and with heavy loads the water may fill up repeatedly. |
| The washing machine does not spin. | <ul style="list-style-type: none"> • The rinse hold may be active. Press the Rinse Hold button to continue. • If a small load is in the washing machine, it may be detected as an unbalanced load and may stop spinning after a number of attempts. Select the manual spin. |
| There's no water going into the washing machine during rinse operation. | Before rinsing, the washing machine spins to drain water remaining from the wash. The water will fill up after that. |
| During the spin-dry, the drum stops and rotates several times. | This is normal. The washing machine has detected an unbalanced load and is trying to correct it. |
| Foam and water remain in the door or door seal. | Although foam and water may remain, it does not have any influence on the performance of a rinse. |
| Spin starting is repeated. | This is normal. Although spin starting may be repeated, it is a function made to spin quietly. |

| | |
|--|--|
| There's not much foam. | <ul style="list-style-type: none"> • This can happen if you've put powder detergent directly into the drum – you must put it in the detergent drawer. • The amount of foam can vary, depending on the temperature, level and softness of your water. • You may not be using enough detergent. • You may be using a reduced-foam type of detergent. • Heavily soiled laundry can reduce the amount of foam. • Larger loads of laundry can also reduce the amount of foam. |
| There's a lot of foam | <ul style="list-style-type: none"> • The amount of foam can vary depending on the temperature, level and softness of your water. • You may have used too much detergent. • The type of detergent you use could cause excess foam. |
| Fabric softener overflows | <ul style="list-style-type: none"> • You may have exceeded the MAX level in the softener drawer. • You may have spilt the liquid by closing the softener drawer too sharply. |
| There's a residue of powder detergent at the end of the wash | This can happen if you've put powder detergent directly into the drum – you must put it in the detergent drawer. |
| There's an unusual noise or vibration | <ul style="list-style-type: none"> • Check that there's nothing metal in the drum. • Make sure the transit bolts used in transportation have been removed. • Check that the washing machine feet have been levelled correctly. • Check the washing machine is on a flat, stable surface. |
| There's a noise when the water drains away | This is normal, it's the pump starting and stopping. |
| The electricity supply cuts out while the washing machine's on | The washing machine will stop (do not open the door if the machine is full of water). When the power comes back on, the washing machine will continue the programme. |
| The water supply is disrupted | When the water comes back on, it may be impure at first. You'll need to disconnect the water-supply hose and drain any impure water through the tap before using your washing machine again. Remember to re-connect the water supply hose first. |
| Excessive foam in the detergent drawer | Press the Start/Pause button. Change the programme to the Rinse selection to manually rinse and drain the drum. Use the correct amount of detergent next time. |

Questions and Answers

| Issues | Reasons | Solutions |
|--|---|--|
| Washing machine cannot start up | | <ul style="list-style-type: none"> • Check if the door is closed tightly. • Check if power plug is inserted well. • Check if water supply tap is opened. • Check if button Start/Pause is pressed. • Check if button Power is pressed. |
| Door cannot be opened | <ul style="list-style-type: none"> • Machine's safety protection design working. | <ul style="list-style-type: none"> • Disconnect the power. |
| Heating fault | <ul style="list-style-type: none"> • NTC is damaged and heating pipe is aging. | <ul style="list-style-type: none"> • Can normally wash the clothes. • Only cannot wash with heating. • Shall contact the service center promptly. |
| Water leakage | <ul style="list-style-type: none"> • The connection between inlet pipe or outlet hose and tap or washing machine is not tight. • Drain pipe in the room is blocked. | <ul style="list-style-type: none"> • Check and fasten water pipes. • Clean up outlet hose and ask a specialized person to repair it when necessary. |
| Water is overflowed from the bottom of the machine | <ul style="list-style-type: none"> • The inlet pipe is not connected firmly. • Outlet hose has water leakage. | <ul style="list-style-type: none"> • Fix the inlet pipe. • Replace the drain hose. |
| Indicator or display does not light | <ul style="list-style-type: none"> • Power is disconnected. • PC board has problems. • Harness has connection problem. | <ul style="list-style-type: none"> • Check if the power is shut down and power plug is connected correctly. • If not, please call up service line. |
| Detergent residues in the box | <ul style="list-style-type: none"> • Washing powder is dampened and agglomerated. | <ul style="list-style-type: none"> • Clean and wipe the box. • Use liquid detergents or the detergents special for drum. |
| Washing effects are not good | <ul style="list-style-type: none"> • The clothes are too dirty. • Insufficient detergent quantity. | <ul style="list-style-type: none"> • Select a proper procedure. • Add the proper detergent quantity according to the instructions in detergent package. |
| Abnormal noise Great vibration | | <ul style="list-style-type: none"> • Check if the fixing (bolts) has been removed. • If cabinet is installed on th solid and level floor. • Check if there are any brrettes or metal articles inside. • Check if the legs in the washing machine are adjusted level. See page 9. |

Error Codes

| Display LED | Reason | Solutions |
|-------------------|--|--|
| E _r 10 | Inlet water overtime of 7 min | <ul style="list-style-type: none"> Open the water tap, to check if the inlet hose is squashed or kinked, check the filter in the inlet valve is blocked or not; check if the water pressure is too low. |
| E _r 21 | Overtime 3 min of the drainage | <ul style="list-style-type: none"> Check if the drain pump is blocked. |
| E _r 30 | The door has not been closed over 3 times | <ul style="list-style-type: none"> Check if the door of the washing machine is closed. Check if the clothes is pinned by the door. |
| Others | <ul style="list-style-type: none"> Please call up the service line if there is any other problem. | |

Specifications

| Parameter | |
|-------------------------|----------------|
| Washing Capacity | 8.0kg |
| Dimension(W*D*H) | 595*565*850 |
| Weight | 66kg |
| Rated Power | 2000W |
| Power Supply | 220-240V~,50Hz |
| Rated Current | 10A |
| Standard Water Pressure | 0.05MPa~1MPa |

Features and specifications are subject to change without prior notice.

Product Fiche

Brand:Brandt

Model:BWF48TCW/BWF48TR/BWF48TB

Rated capacity:8kg

Energy efficiency class:A+++

EU Ecolabel:N/A

Energy consumption 196kwh per year, based on 220 standard washing cycles for cotton programmes at 60°C and 40°C at full and partial load, and the consumption of the low-power modes.Actual energy consumption will depend on how the appliance is used.

Water consumption 10500 litres per year, based on 220 standard washing cycles for cotton programmes at 60°C and 40°C at full and partial load. Actual water consumption will depend on how the appliance is used.

Spin-drying efficiency class B/B on a scale from G (least efficient) to A (most efficient)

Maximum spin speed:1200/1400rpm

Consumption values(1200rpm):

| Standard Programme | Load | Energy consumption | Water consumption | Remaining moisture content | Programme duration |
|--------------------|------|--------------------|-------------------|----------------------------|--------------------|
| Cotton 60°C | 8kg | 0.97kwh | 54L | 50% | 235min |
| Cotton 60°C | 4kg | 0.75kwh | 45L | 55% | 232min |
| Cotton 40°C | 4kg | 0.72kwh | 45L | 56% | 214min |

Consumption values(1400rpm):

| Standard Programme | Load | Energy consumption | Water consumption | Remaining moisture content | Programme duration |
|--------------------|------|--------------------|-------------------|----------------------------|--------------------|
| Cotton 60°C | 8kg | 0.97kwh | 54L | 50% | 235min |
| Cotton 60°C | 4kg | 0.75kwh | 45L | 55% | 232min |
| Cotton 40°C | 4kg | 0.72kwh | 45L | 56% | 214min |

Notes:

1. Programme setting for testing in accordance with applicable standard EN60456-2011.
2. When using the test programmes, wash the specified load using the maximum spin speed.
3. The actual parameters will depend on how the appliance is used,and maybe different with the parameters in above mentioned table.

Off mode power consumption:0.5W

Left-on mode power consumption:1.0W

Airborne acoustical noise (washing):58

Airborne acoustical noise (spinning):76/78

Notes: The airborne acoustical noise emissions during washing/spinning for the standard 60°C cotton programme at full load.



This symbol on the product or in the instructions means that your electrical and electronic equipment should be disposed at the end of its life separately from your household waste. There are separate collection systems for recycling in the EU.

For more information, please contact the local authority or your retailer where you purchased the product.